

Ellicott 1870 Dragon Dredge

“Caitlyn”

Offered for sale

ex Port Lafito, Haiti

Overall Specifications

		1870	1870
		English	Metric
GENERAL	Discharge pipe x Suction pipe	20" x 20"	500 x 500
	Dredging Depth, maximum	50'	15 m
	Length, Overall, with Ladder raised	117'	35.5 m
	Length, Hull	82'	25 m
	Width, Hull, including side pontoons	27'	8.2 m
	Depth, Hull	6'	1.8 m
	Number of Pontoons (tanks)	5	5
	Plate Thickness of center pontoon	5/16"	8
	Dry Weight	410,000	186,000 kg
	Hull Draft, not including spuds	4'	1.2 m
	Fuel Capacity	7,900 gallons	29,900 litres
	Swing Width, @ minimum Dredging Depth	152'	46.3 m
	Swing Width, @ maximum Dredging Depth	122'	37.2 m
	ENGINES	Main Engine (Caterpillar)	3512
Power		1280 HP	955 kW
Cooling		Heat Exchanger	Heat Exchanger
Auxiliary Engine (Caterpillar)		C-15	C-15
Power		475 HP	354 kW
Rating		Tier 3	Tier 3
TOTAL INSTALLED POWER	Cooling	Heat Exchanger	Heat Exchanger
	Not including optional Genset	1755 HP	1309 kW
CUTTER DRIVE	Power at Cutter Shaft	250 HP	186 kW
	Cutter Speed	18-27-36 RPM	18-27-36 RPM
	Cutter Diameter	54"	1372
	Cutting Force	14,900	6,759
SPUDS	Diameter	24"	610
	Length	67'-4"	20.4 m
PRODUCTION	Capacity Range of Pumping System	up to 1200 yd3/hr up to 1000 m3/hr	

1870 Dragon Dredge 'Caitlyn'

1,176 engine hours

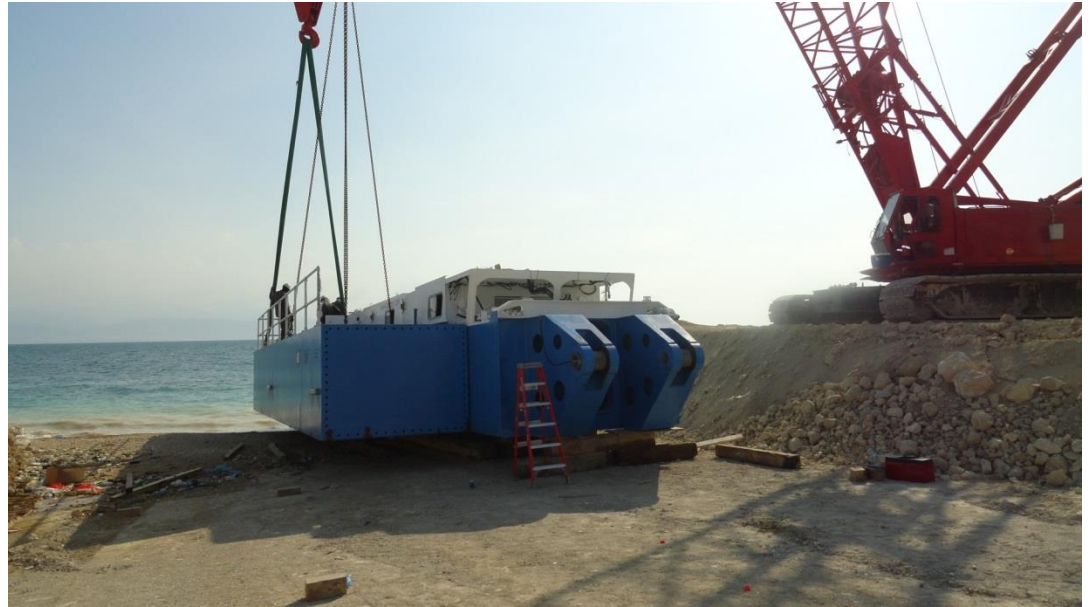
Dredge up to 15 m.



1870 Dragon Dredge 'Caitlyn'

Assembled and launched in Haiti,
October 2015

River, port and harbor dredging



1870 Dragon Dredge 'Caitlyn'

Ellicott maintenance and tech support

Cutter head and suction—excellent for
gravel and sand



1870 Dragon Dredge 'Caitlyn'

Seaboard Marine Engineers assembly

Regular maintenance



1870 Dragon Dredge 'Caitlyn'

Run and engineering logs available

Perfect for small ports



1870 Dragon Dredge 'Caitlyn'

US\$2,199,000

ex Haiti

Additional information available upon
request.

1870dragondredge@gbgroup.com

